

Product Description:

Clinglite is a premium large format media with innovative cling technology for window graphics, printing, and sign-making needs.

It doesn't rely on adhesive, magnets or static, very easy to cling onto glass, varnished wood, stainless steel, PVC, tiles, and other smooth surface. It is also suitable for simple curve use.

The base film of Clinglite is white PP for indoor advertisement. It's low-tack and will not leave adverse effect on applying surface. Clinglite is adhesive-free, smudge-free & PVC-free, 100% recyclable, and therefore environmentally friendly.

Application

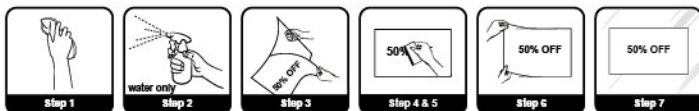
Excellent for indoor advertisement.

Print Compatibility

- Eco-solvent
- Latex

Basic Installation Instructions:

1. The surfaces to apply Clinglite need to be clean and free of dirt.
2. Moisture the glass first before clinging.
3. Peeling the whole liner off gently while installing.
4. Carefully position the film so that it is properly aligned on all sides.
5. Working from middle of the graphic to all sides, continue by using a fitting tool to remove air bubbles with a bit strength when completely removed and the graphic is in place.
 - Don't use any sharp tool to remove air bubbles so as not to destroy the graphic, or use the release liner to cover on the graphic then remove.
6. To reposition, slowly peel off surface.
7. Step back and admire your work.



Guidelines

Printing Tips:

Suitable printing condition: Temperature 15~30°C (59~86°F) / Humidity 30~60%;

Cautions:

- The graphics film can be repositioned up to 10 times at least, but make sure the Micro-suction layer is always free of dirt. Once any dirt on it, please use an adhesive tape to stick the dirt to renew for reuse. Because of the character for PP based film, suggest to reposition as less times as possible.
- Not recommended for outdoor usage.
- Not recommended with hot laminating.
- To optimize the printing quality, printers need to be set for highest print quality.

Storage:

- Store at room temperature conditions of 50-73°F (10-25°C) and 50% relative humidity;
- We recommend that you always keep this product in its original packaging.

Physical Characteristics

Caliper (face)	195micron (7.7mils)
Weight	135g/m ²
180° Peel Strength (24Hr)	4.2g/25mm (0.15oz/in)
Elongation	150% max
Appearance	White Matte
Chemical Resistance	Resistant to most mild acids, alkalis, and salt solutions
Service Temperature	-40° to +200°F
Dimensional Stability (300°F, 48Hr, Applied to a Glass)	<0.1 inch
Shelf Life (72°F, 50% R.H.)	12 months

Available size for fast delivery

1370mm x 30m / roll